

Stability of Natamycin and Its Cyclodextrin Inclusion Complexes in Aqueous Solution

JOHN L. KOONTZ,[†] JOSEPH E. MARCY,^{*,†} WILLIAM E. BARBEAU,[‡] AND
 SUSAN E. DUNCAN[†]

Department of Food Science and Technology and Department of Human Nutrition, Foods and Exercise, Virginia Polytechnic Institute and State University, Blacksburg, Virginia 24061

Aqueous solutions of natamycin and its β -cyclodextrin (β -CD), hydroxypropyl β -cyclodextrin, and γ -cyclodextrin (γ -CD) inclusion complexes were completely degraded after 24 h of exposure to 1000 lx fluorescent lighting at 4 °C. After 14 days of storage in darkness at 4 °C, 92.2% of natamycin remained in active form. The natamycin: β -CD complex and natamycin: γ -CD complex were significantly more stable ($p < 0.05$) than natamycin in its free state in aqueous solutions stored in darkness at 4 °C. Clear poly(ethylene terephthalate) packaging with a UV light absorber allowed 85.0% of natamycin to remain after 14 days of storage under 1000 lx fluorescent lighting at 4 °C. Natamycin:cyclodextrin complexes can be dissociated for analysis in methanol/water/acetic acid, 60:40:5, v/v/v. Natamycin and its complexes in dissociated form were quantified by reverse phase HPLC with detection by photodiode array at 304 nm.

KEYWORDS: Natamycin; pimarin; polyene macrolide; antifungal; preservative; cyclodextrin; inclusion complex; stability; photodegradation; UV absorber

INTRODUCTION

The polyene macrolide antibiotics are very sensitive to ultraviolet (UV) light relative to other antimicrobials (1). Natamycin is one such tetraene that is a broad-spectrum antifungal employed to extend the shelf life of cheese. It is applied on cheese by dipping or spraying with an aqueous suspension or as a dry mixture with an anticaking agent. During the ripening and storage of cheese products, natamycin is decomposed, but the rate of degradation remains uncertain (2). Cheese products are exposed to high-intensity fluorescent lighting in the retail dairy case, until consumer purchase and storage. The UV light emitted from the fluorescent lamps affects the cheese product through the translucent sections of the polymer packaging. Shredded cheese, with its significantly increased surface area, receives a greater dosage of UV light exposure. Critical amounts of natamycin treated onto these cheese products are likely degraded by the time of purchase by the consumer.

The photolysis of natamycin in methanolic solution is very rapid upon light exposure to a xenon lamp with a spectrum similar to that of natural sunlight (3). UV irradiation exposure was clearly the most damaging treatment to decrease the biological activity of natamycin compared to exposure to air oxidation and ferrous ions (4).

The stability of natamycin is also affected by extreme pH conditions, heat exposure, and oxidation. At low pH values,

natamycin is rapidly degraded, producing mycosamine by hydrolysis of the glycosidic bond (5). At high pH values, the lactone is rapidly saponified, forming the biologically inactive natamyoic acid (6). However, natamycin is a stable compound in its trihydrate form when it is protected from both light and moisture. Several years of storage as a dry powder at room temperature results in only a few percent loss of activity (6). A moderate reduction in biological activity was observed after a typical heat sterilization process (7). Oxidative inactivation of natamycin has also been reported (8, 9).

Cyclodextrins (CDs) act as host molecules to form inclusion complexes with a wide variety of guest molecules. The CD molecule can at least partially shield the guest molecule from degradation caused by light, oxidation, heat, and acidic or alkaline conditions. Labile guests can be insulated from a potentially corrosive environment and, therefore, reduce or even prevent drug hydrolysis, oxidation, steric rearrangement, isomerization, polymerization, and even enzymatic decomposition of drugs (10).

The stability of a few polyene macrolide antibiotics has been increased upon complexation with γ -cyclodextrin (γ -CD). The degradation of amphotericin B was significantly suppressed at both high and low pH extremes by complexation with γ -CD (11). Aqueous solutions of nystatin in the pH range of 5–8 showed stability increases upon addition of γ -CD (12). The thermal stability of flavofungin dramatically increased when it was complexed with γ -CD (13).

A better understanding of the influence of UV light emission from fluorescent lamps on the stability of natamycin is necessary

* Author to whom correspondence should be addressed [telephone (540) 231-7850; fax (540) 231-9293; e-mail jmarcy@vt.edu].

[†] Department of Food Science and Technology.

[‡] Department of Human Nutrition, Foods and Exercise.

to ensure that the natamycin on the cheese surface remains in its intact, active form. The purpose of this study was to determine the stability of natamycin and its inclusion complexes with β -cyclodextrin (β -CD), hydroxypropyl β -cyclodextrin (HP β -CD), and γ -CD in aqueous solution.

MATERIALS AND METHODS

Materials. Natamycin of 90.5% purity was supplied by DSM Food Specialties (Delft, The Netherlands). USP Reference Standard Natamycin of 91.7% purity (U. S. Pharmacopeia, Rockville, MD) was used as an external standard in HPLC analysis. β -CD of food grade, HP β -CD of pharmaceutical grade (5.3–5.4 DS), and γ -CD were provided by Ceresstar (Hammond, IN). High-purity water was prepared with a Corning Mega-Pure System MP-6A (Corning, NY). High-barrier poly(ethylene) (PE) bags with ethylene vinyl alcohol and poly(ethylene terephthalate) (PET) bags were supplied by Cryovac Sealed Air Corp. (Duncan, SC). A PET bottle (Owens-Illinois, Perrysburg, OH) and a five-layer PET bottle containing a UV absorber (Continental PET Technologies, Florence, KY) were obtained. Preparation of inclusion complexes of natamycin with β -CD, HP β -CD, and γ -CD was performed as described previously (14).

HPLC Analyses. Analyses were performed with a Waters 717 plus autosampler, a Waters 600 controller, and a Waters 996 photodiode array detector (PDA) (Waters Corp., Milford, MA). A 4.6×150 mm, $5 \mu\text{m}$, Waters Spherisorb C8 reverse phase analytical column, equipped with a 4.6×10 mm, $5 \mu\text{m}$, Waters Spherisorb C8 guard column was used at ambient temperature. Three mobile phase systems were employed: (A) methanol/water/acetic acid, 60:40:5, v/v/v; (B) 100% water; and (C) 100% methanol. Sample vials were held in the autosampler protected from light at a temperature of 4°C . The samples were eluted in isocratic mode in mobile phase A for 20 min. The flow rate was 1.0 mL/min, the injection volume was $20 \mu\text{L}$, and the detection wavelength by PDA was 304 nm. The wavelength range of 260–360 nm was detected by PDA. Due to the very limited solubility of β -CD in methanol/water mixtures (15, 16) and the practical insolubility of natamycin in water, the system was designed to undergo a series of purges. A linear gradient to mobile phase B was applied from 20 to 25 min and held at 100% B until 30 min to ensure removal of any residual CD from the system. A linear gradient to mobile phase C was applied from 30 to 35 min and held at 100% C until 40 min to ensure removal of any residual natamycin. Finally, a linear gradient back to mobile phase A was applied, and the system was allowed to re-equilibrate at 100% A for 5 min prior to the next injection.

An external standard curve was constructed using USP Reference Standard Natamycin to quantify the free natamycin content in all samples. Waters Millennium³² software version 3.20 was used for data management.

Treatment of Samples. Aqueous solutions of 20 mg/L natamycin and natamycin content in the respective β -CD, HP β -CD, and γ -CD complexes were prepared in triplicate. These solutions were then transferred to PE bags and packaged under two different atmospheric conditions: (1) air and (2) modified atmosphere packaging (MAP). MAP gas composition was 75% N_2 and 25% CO_2 . Samples were modified atmosphere packaged using a proportional gas blender (Smith Equipment, model 299-037F, Watertown, SD) and vacuum packaging machine (Koch Supplies Inc., model X200, Kansas City, MO). N_2 and CO_2 concentrations in the packages were verified by a headspace oxygen/carbon dioxide analyzer (Illinois Instruments, Inc., model 6600, Ingleside, IL). Gas samples were drawn by a hypodermic needle through a self-sealing rubber septum adhered to each package and injected into the analyzer. Sample solutions were not ultrasonicated or bubbled with gas to remove any dissolved oxygen.

These samples were stored at 4°C with half of the bags under fluorescent lighting and the other half in darkness. The samples were illuminated by cool white 40-W T12 fluorescent bulbs (GE Lighting, Cleveland, OH) mounted 16 cm above the samples. The samples were oriented to receive an illumination intensity of 1000 ± 50 lx. All light intensity measurements were performed with a foot candle/lux meter (Extech Instruments, Waltham, MA). At time intervals of 0, 1, 3, 7, and 14 days, the appropriate samples were removed from storage and transferred to amber glass vials for analysis of natamycin stability by

HPLC. Every effort was made to limit light exposure during transit time to analysis by HPLC.

Aqueous solutions of 20 mg/L natamycin were added to these three packaging materials: a PET bag (PET 1), a PET bottle (PET 2), and a five-layer PET bottle containing a UV absorber (PET + UV absorber). These samples were exposed to 1000 lx fluorescent lighting at 4°C as described previously and quantified for remaining natamycin content by HPLC.

Spectral Overlay of Polymer Packaging. A spectral scan of a natamycin sample in water between the wavelengths of 250 and 400 nm was performed on a Shimadzu UV-2101PC UV-vis scanning spectrophotometer (Shimadzu Scientific Instruments, Inc., Columbia, MD). Side wall cutouts of PET 1, PET 2, and PET + UV absorber were prepared. Each thin strip of polymer was placed in a UV cuvette and qualitatively analyzed by a spectral scan between 250 and 400 nm.

Statistical Analysis. Due to rapid degradation of natamycin under fluorescent lighting, no statistical analysis was necessary for light-exposed samples. Only samples stored in darkness were statistically analyzed. The sample order of HPLC analysis was randomized when the autosampler was loaded. Statistical analysis of the registered variables was performed by the general linear model supported by SAS (version 8.12, 2001, SAS Institute, Inc., Cary, NC). Multiple comparisons were adjusted for the Tukey–Kramer method of the general linear model procedure to make statistical comparisons. Significant interactions were analyzed using the slicing function of the general linear model procedure. Effects were considered to be significant at $p < 0.05$.

RESULTS AND DISCUSSION

Dissociation of Complexes. At the low pH of mobile phase A, both the amino and carboxyl groups of natamycin are protonated, yielding a net positive charge to the molecule. Neutral compounds have larger complex stability constants than the corresponding protonated or ionized species (17). Additionally, organic solvents usually decrease CD complex stability relative to pure water. The most commonly proposed idea for this behavior is that increasing the organic content of the aqueous mixture decreases the hydrophobic driving force, which is a major contributor to the stability of the complex in water (18). Therefore, natamycin as the guest molecule appeared to be completely dissociated from the CD when dissolved in mobile phase A. This was further indicated by the lack of any red shift in the UV absorbance spectrum of natamycin when its complexes with β -CD, HP β -CD, and γ -CD were dissolved in the mobile phase.

Aqueous Stability in Darkness. The stability of natamycin and its CD complexes statistically differed when averaged across the storage time. Concentration decreased as storage time increased; thus, natamycin and its CD complexes degrade over time at 4°C when stored in darkness. There was no significant difference when natamycin and its CD complexes were stored in air or a modified atmosphere of 75% N_2 and 25% CO_2 . The interaction of natamycin formulation and storage time was significant with different formulation types degrading at different rates over time.

The β -CD:natamycin complex and γ -CD:natamycin complex were significantly more stable than natamycin in its free state (Figure 1). The HP β -CD:natamycin complex does not significantly increase the stability of free natamycin. At 7 days of storage, a significant difference among formulations first appears. Between 7 and 14 days of storage, there is an increase in the degradation rate of all formulations to varying degrees. Natamycin and its HP β -CD complex appear to have faster degradation rates compared to natamycin complexes of β -CD and γ -CD. Natamycin is considered to be relatively stable in aqueous solution when stored in the dark at 4°C because 92.2% of natamycin remained after 14 days.

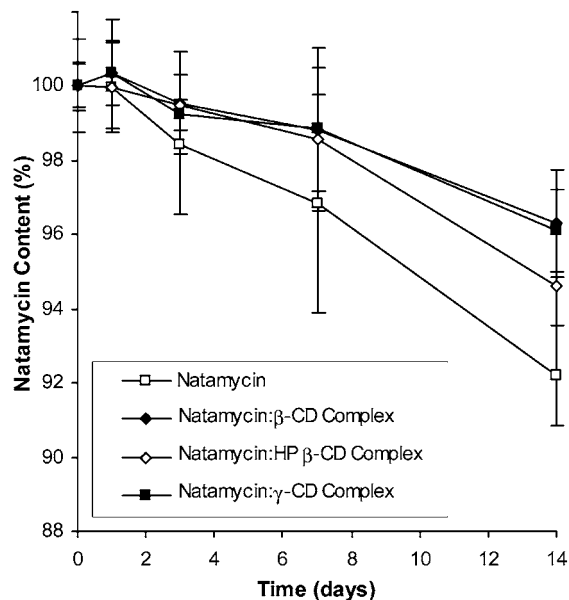


Figure 1. Degradation of 20 mg/L aqueous solutions of natamycin in free and cyclodextrin (CD) complexed states while stored in the dark in PE bags at 4 °C.

Methanolic Stability in Darkness. The international standard for determining the natamycin content of cheese uses mobile phase A (methanol/water/acetic acid, 60:40:5, v/v/v). Methanol is also the solvent used to extract natamycin from cheese and cheese rind; however, this standard mentions that natamycin is unstable in aqueous methanol (19–21). More recent papers have stated that solutions of natamycin in aqueous or pure methanol are stable (22, 23). In agreement with more recent studies, a 200 mg/L stock solution of natamycin in pure methanol was not found to have any apparent degradation after 24 h of storage in darkness at room temperature. It is likely that these previous reports of natamycin instability in methanol were simply the result of inadequate protection from light.

Aqueous Stability under Fluorescent Lighting. The 1000 lx intensity of the fluorescent lighting employed in this study is typical of the exposure of products in dairy cases in grocery stores (24). PE packaging does not have any substantial absorption of UV irradiation, so these sample bags were exposed to the complete spectral power distribution of the fluorescent lamps. After 24 h of 1000 lx fluorescent light exposure, 20 mg/L aqueous solutions of natamycin in its free and complexed states with β -CD, HP β -CD, and γ -CD were completely degraded.

Spectral Overlay of Polymer Packaging. Photodegradation of natamycin is greatly influenced by the wavelength of absorbed light (25). Visible light does not degrade natamycin (8, 26), but rapid inactivation of natamycin is caused by UV irradiation primarily with wavelengths between 300 and 350 nm (8). The addition of sodium potassium chlorophyllin, which has considerable absorption in the UV wavelength range from 300 to 400 nm, has been shown to prevent inactivation of natamycin by UV irradiation (8).

The photostabilization principle of spectral overlay involves protecting a photolabile compound by the addition of a substance that absorbs light in a similar wavelength range (1). Although typically added as a protective excipient directly to a formulation, packaging materials can also be used to block destructive UV irradiation. Three types of clear PET packaging were examined for their ability to filter specific wavelengths of UV irradiation. In Figure 2, the UV absorption spectra in the range of 250–400 nm of these PET packaging materials are displayed relative to that of natamycin in water. These polymers have

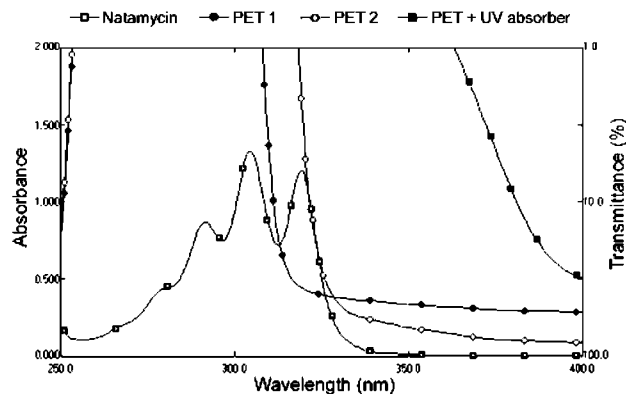


Figure 2. UV absorption spectrum of natamycin in water compared with spectra of different types of PET packaging films.

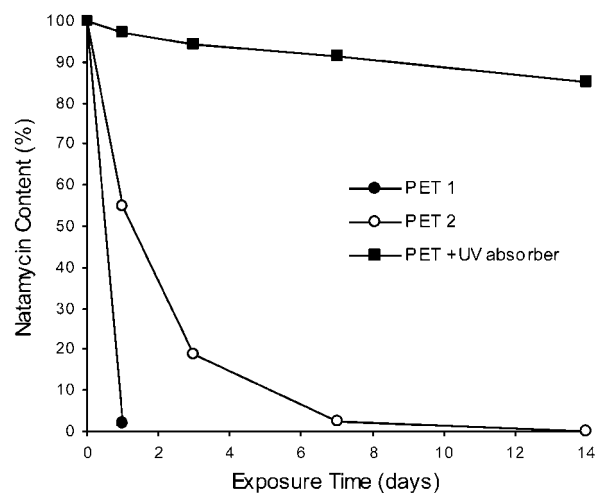


Figure 3. Stability of 20 mg/L aqueous solutions of natamycin exposed to fluorescent lighting of 1000 lx while stored in different types of clear PET packaging at 4 °C.

different UV cutoff wavelengths (<1% transmittance) of 308 nm for PET 1, 318 nm for PET 2, and 363 nm for PET + UV absorber.

Figure 3 shows that the degradation of aqueous solutions of 20 mg/L natamycin in PET 1 and PET 2 packaging remains very rapid under 1000 lx fluorescent lighting. Natamycin stored in PET 1 and PET 2 packaging was almost completely inactivated after 1 and 7 days of exposure, respectively. However, an exceptional increase in the photostability of natamycin was discovered in the PET + UV absorber packaging. After 14 days of continuous exposure to 1000 lx fluorescent lighting, 85.0% of the natamycin in this package remains intact in aqueous solution.

Photodegradation Products. The photodegradation products of natamycin are all more polar than natamycin because they elute earlier under the chromatographic conditions. In Figure 4, pure natamycin elutes at 13.0 min and its photodegradation products have a prominent peak at 10.7 min. This broad irregularly shaped peak is likely a mixture of several different degradation products. The PDA detection in the range of 260–360 nm allowed the degradation peak at 10.7 min to be characterized as a typical tetraene UV spectrum, which was identical to that of intact natamycin. The photodegradation process yields several products that contain the tetraene chromophore but are not of the original structure of the parent natamycin.

The greater selectivity of the HPLC method appears to be a necessity for quantifying the amount of natamycin that remains

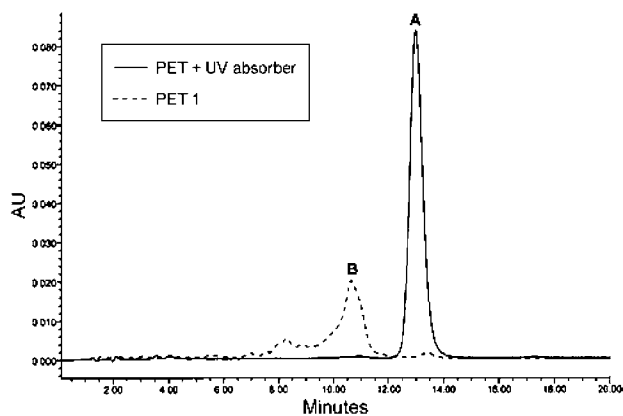


Figure 4. HPLC chromatograms of aqueous solutions of natamycin after 24 h of exposure to fluorescent lighting of 1000 lx and storage at 4 °C in different types of clear PET packaging. Detection: UV absorbance at 304 nm. Peaks: A = natamycin; B = photodegradation products.

on cheese which has been exposed to fluorescent lighting. In agreement with Dekker and Ark (8), the UV absorption spectrum of natamycin may be only partially reduced after inactivation by UV irradiation. Therefore, the UV spectrophotometric method (19–21) will falsely indicate the presence of active natamycin and should be discontinued as a method to monitor the stability of natamycin that is exposed to a UV irradiation source.

Improved Antifungal Effectiveness. This study calls into question the current effectiveness of natamycin treated onto cheese products that are stored under high-intensity fluorescent lighting, although the incorporation of an appropriate UV absorber into the polymer packaging can greatly protect natamycin while preserving the clarity of the package for consumers to view the product. The formation of inclusion complexes of natamycin with either β -CD or γ -CD allows increased stability compared to free natamycin. By combining these two technologies, very dramatic increases in the stability of natamycin can be achieved in aqueous model systems.

ABBREVIATIONS USED

CD, cyclodextrin; β -CD, β -cyclodextrin; HP β -CD, hydroxypropyl β -cyclodextrin; γ -CD, γ -cyclodextrin; DS, degree of substitution; PE, poly(ethylene); PET, poly(ethylene terephthalate).

LITERATURE CITED

- Thoma, K.; Kübler, N. New results in the photostability of antimicrobics. In *Drugs: Photochemistry and Photostability*; Albini, A., Fasani, E., Eds.; The Royal Society of Chemistry: Cambridge, U.K., 1998; pp 116–133.
- Lück, E.; Jäger, M. Natamycin. In *Antimicrobial Food Additives: Characteristics, Uses, Effects*; Springer-Verlag: Berlin, Germany, 1997; pp 214–218.
- Thoma, K.; Kübler, N. Photodegradation of antimicrobial drugs. 2. Communication: Photodegradation of polyene antibiotics. *Pharmazie* **1997**, *52*, 294–302.
- Gutteridge, J. M. C.; Thomas, A. H.; Cuthbert, A. Free radical damage to polyene antifungal antibiotics: Changes in biological activity and thiobarbituric acid reactivity. *J. Appl. Biochem.* **1983**, *5*, 53–58.
- Brik, H. New high-molecular decomposition products of natamycin (pimaricin) with intact lactone-ring. *J. Antibiot.* **1976**, *29*, 632–637.
- Brik, H. Natamycin. In *Analytical Profiles of Drug Substances*; Florey, K., Ed.; Academic Press: New York, 1981; pp 513–561.

- Struyk, A. P.; Hoette, I.; Drost, G.; Waisvisz, J. M.; Van Eek, T.; Hoogerheide, J. C. Pimaricin, a new antifungal antibiotic. *Antibiot. Annu.* **1957–1958**, 878–885.
- Dekker, J.; Ark, P. A. Protection of antibiotic pimaricin from oxidation and ultraviolet light by chlorophyllin and other compounds. *Antibiot. Chemother. (Washington, DC)* **1959**, *9*, 327–332.
- Raab, W. P. *Natamycin (Pimaricin): Its Properties and Possibilities in Medicine*; Georg Thieme: Stuttgart, Germany, 1972.
- Loftsson, T.; Brewster, M. E. Pharmaceutical applications of cyclodextrins. I. Drug solubilization and stabilization. *J. Pharm. Sci.* **1996**, *85*, 1017–1025.
- Rajagopalan, N.; Chen, S. C.; Chow, W.-S. A study of the inclusion complex of amphotericin-B with γ -cyclodextrin. *Int. J. Pharm.* **1986**, *29*, 161–168.
- van Doorne, H.; Bosch, E. H. Stability and in vitro activity of nystatin and its γ -cyclodextrin complex against *Candida albicans*. *Int. J. Pharm.* **1991**, *73*, 43–49.
- Vikmon, M.; Gerlóczy, A.; Szejtli, J. Complexation of polyene antibiotics with γ -cyclodextrin. In *Proceedings of the International Symposium on Cyclodextrins, 4th*, Munich, West Germany, April 20–22, 1988; Huber, O., Szejtli, J., Eds.; Kluwer: Dordrecht, The Netherlands, 1988; pp 307–312.
- Koontz, J. L. Improved properties of natamycin upon formation of cyclodextrin inclusion complexes. M.S. Thesis, Virginia Polytechnic Institute and State University, Blacksburg, VA, 2003.
- Taghvaei, M.; Stewart, G. H. β -Cyclodextrin solubility in reversed-phase high-performance liquid chromatographic eluents. *Anal. Chem.* **1991**, *63*, 1902–1904.
- Chatjigakis, A. K.; Donzé, C.; Coleman, A. W. Solubility behavior of β -cyclodextrin in water/cosolvent mixtures. *Anal. Chem.* **1992**, *64*, 1632–1634.
- Rekharsky, M. V.; Inoue, Y. Complexation thermodynamics of cyclodextrins. *Chem. Rev.* **1998**, *98*, 1875–1917.
- Connors, K. A. The stability of cyclodextrin complexes in solution. *Chem. Rev.* **1997**, *97*, 1325–1357.
- De Ruig, W. G.; Van Oostrom, J. J.; Leenheer, K. Spectrometric and liquid chromatographic determination of natamycin in cheese and cheese rind. *J. Assoc. Off. Anal. Chem.* **1987**, *70*, 944–948.
- International Organization for Standardization. *Cheese and Cheese Rind—Determination of Natamycin Content—Method by Molecular Absorption Spectrometry and by High-Performance Liquid Chromatography*; ISO Standard 9233; Geneva, Switzerland, 1991.
- International Dairy Federation. *Cheese and Cheese Rind Determination of Natamycin Content Method by Molecular Absorption Spectrometry and by High-Performance Liquid Chromatography*; IDF Standard 140A; Brussels, Belgium, 1992.
- Fletouris, D. J.; Botsoglou, N. A.; Mantis, A. J. Rapid spectrophotometric method for analyzing natamycin in cheese and cheese rind. *J. AOAC Int.* **1995**, *78*, 1024–1029.
- Capitán-Vallvey, L. F.; Checa-Moreno, R.; Navas, N. Rapid ultraviolet spectrophotometric and liquid chromatographic methods for the determination of natamycin in lactoserum matrix. *J. AOAC Int.* **2000**, *83*, 802–808.
- Olsen, J. R.; Ashoor, S. H. An assessment of light-induced off-flavors in retail milk. *J. Dairy Sci.* **1987**, *70*, 1362–1370.
- Thoma, K.; Kübler, N. Wavelength dependency of photodegradation processes of drug substances. *Pharmazie* **1996**, *51*, 660–664.
- Zondag, E.; Posthuma, J.; Berends, W. On the mechanism of a photodynamic reaction. *Biochim. Biophys. Acta* **1960**, *39*, 178–179.

Received for review May 2, 2003. Revised manuscript received August 6, 2003. Accepted August 11, 2003. We thank Dairy Management, Inc., for financially supporting this research.